



**GLYCINE**

SINCE 1914

MANUAL INSTRUCTIONS

AUTOMATIC

# AIRMAN Cal.N°GL 293- GMT

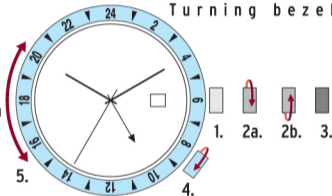
SWISS AUTOMATIC MOVEMENT

Standard or Screwed crown at 3h

Screwed crown at 4h  
Turning bezel

## INSTRUCTIONS

- Pos 1. Normal position:  
no correction possible
- Pos 2a. Date setting: pull or unscrew,  
slightly pull & turn
- Pos 2b. Second Time Zone setting:  
pull or unscrew, slightly pull & turn
- Pos 3. Hours & Minutes setting:  
pull or unscrew, pull out  
completely & turn
4. Unlock turning bezel: unscrew
5. Third Time Zone setting: turn bezel



**WARNING:** In order to secure waterproof quality it is essential that you push and screw the crown tight after every correction.

[WWW.GLYCINE-WATCH.CH](http://WWW.GLYCINE-WATCH.CH)

# AIRMAN Cal.N°GL 293- PURIST

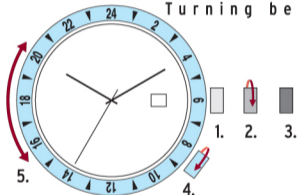
SWISS AUTOMATIC MOVEMENT

Standard or Screwed crown at 3h

Screwed crown at 4h  
Turning bezel

## INSTRUCTIONS

- Pos 1. Normal position: no correction possible
- Pos 2. Date setting: pull or unscrew, slightly pull & turn
- Pos 3. Hours & Minutes setting: pull or unscrew, pull out completely & turn
4. Unlock turning bezel: unscrew
5. Second Time Zone setting: turn bezel



**WARNING:** In order to secure waterproof quality it is essential that you push and screw the crown tight after every correction.

## IF YOU HAVE A BRONZE WATCH

Bronze is used in yachting and marine equipment because of its resistance to corrosion. As Bronze naturally oxidizes a patina will slowly develop that adds a vintage uniqueness to your watch.

**MATERIAL FOR CLEANING:** 1. Sodium bicarbonate powder/  
2. Citric acid/ 3. Demineralised water/ 4. A cup/ 5. Gloves

**CLEANING PROCESS:** 1. Put a teaspoon of bicarbonate & a teaspoon of citric acid in the cup/ 2. Put the whole watch in the cup/ 3. Fill the cup with demineralised water and leave until sparkling effect/ 4. Remove watch from cup & clean with tooth brush/ 5. When watch is clean, rinse it with demineralised water & dry it wearing gloves to avoid traces.

**WARNING:** Before cleaning make sure that the crown is pushed in and tightly screwed in to avoid water infiltrations inside the watch.

# AIRMAN

## Cal.N°GL 224 - DOUBLE 12

SWISS AUTOMATIC MOVEMENT

Screwed crown at 3h

Screwed crown at 4h

Turning bezel

### INSTRUCTIONS

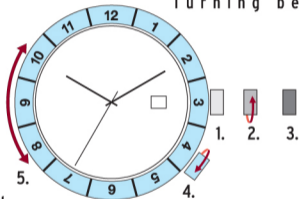
Pos 1. Normal position:  
no correction possible

Pos 2. Date setting: unscrew,  
slightly pull & turn

Pos 3. Hours & Minutes setting:  
unscrew, pull out completely  
& turn

4. Unlock turning bezel: unscrew

5. Second Time Zone setting: turn bezel



**WARNING:** In order to secure waterproof quality it is essential that you push and screw the crown tight after every correction.

## IF YOU HAVE AN AUTOMATIC WATCH

When your watch has not been worn for more than 40 hours the movement will stop. You will need to wind it manually. If your watch has a screwed crown: unscrew the crown & from #1 position turn the crown 20 times. If your watch has a standard crown: from #1 position turn the crown 20 times.

You will also need to re-set the time on the watch. After this, the natural movement of your wrist while you wear the watch will keep the movement operating.

To avoid the need to wind and re-set the watch after non-use, an automatic watch winder box can be used to store your automatic watch.

# COMBAT SUB

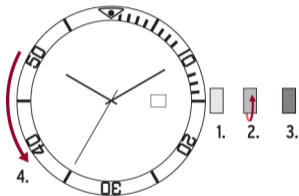
Cal.N°GL 224 - DIVER

SWISS AUTOMATIC MOVEMENT

Screwed crown at 3h  
Turning bezel

## INSTRUCTIONS

- Pos 1. Normal position:  
no correction possible
- Pos 2. Date setting: unscrew,  
slightly pull & turn
- Pos 3. Hours & Minutes setting:  
unscrew, pull out completely  
& turn
- 4. Diver function setting: turn bezel



**WARNING:** In order to secure waterproof quality it is essential that you push and screw the crown tight after every correction.



All Glycine watches are manufactured with special care and attention to detail to ensure a high quality.

---

For further information about your Glycine watch, please visit the Glycine website:

[www.glycine-watch.ch](http://www.glycine-watch.ch)

# COMBAT CLASSIC

Cal.N°GL 224 - 3HD

SWISS AUTOMATIC MOVEMENT

## INSTRUCTIONS

Pos 1. Normal position:  
no correction possible

Pos 2. Date setting: pull slightly  
& turn

Pos 3. Hours & Minutes setting:  
pull out completely & turn



**WARNING:** In order to secure waterproof quality it is essential that you push the crown tight after every correction.

THANK YOU FOR BUYING  
A  
GLYCINE WATCH

# COMBAT CLASSIC

Cal.N°GL 280 - MOON PHASE

SWISS AUTOMATIC MOVEMENT

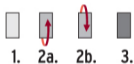
## INSTRUCTIONS

Pos1. Normal position:  
no correction possible

Pos2a. Date setting: pull slightly  
& turn

Pos2b. Phase moon setting: pull  
slightly & turn

Pos3. Hours & Minutes setting:  
pull out completely & turn



**WARNING:** In order to secure waterproof quality it is essential that you push the crown tight after every correction.