



GLYCINE

SINCE 1914

MANUAL INSTRUCTIONS

QUARTZ

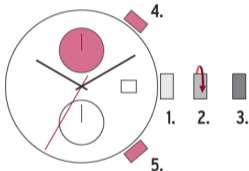
AIRPILOT Cal.N° RONDA 3520.D-CHRONO

SWISS QUARTZ MOVEMENT

Screwed crown at 3h

INSTRUCTIONS

- Pos 1. Normal position:
no correction possible
- Pos 2. Date setting: unscrew,
slightly pull & turn
- Pos 3. Hours & Minutes setting:
unscrew, pull out completely & turn
- 4. Start & Stop chronograph setting:
press once to start & two to stop
- 5. Reset chronograph:
press once



WARNING: In order to secure waterproof quality it is essential that you push and screw the crown tight after every correction.

WWW.GLYCINE-WATCH.CH

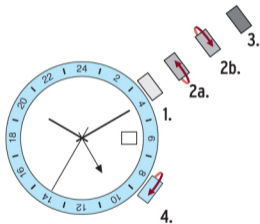
AIRPILOT Cal.N° RONDA 515.24H-GMT

SWISS QUARTZ MOVEMENT

INSTRUCTIONS

Screwed crown at 2h
Screwed crown at 4h

- Pos 1. Normal position:
no correction possible
- Pos 2a. Date setting: unscrew, pull slightly & turn
- Pos 2b. Second Time Zone setting:
unscrew, pull slightly & turn
- Pos 3. Hours & Minutes setting:
unscrew, pull out completely & turn
4. Third Time Zone setting:
unscrew, pull & turn



WARNING: In order to secure waterproof quality it is essential that you push and screw the crown tight after every correction.

IF YOU HAVE A QUARTZ WATCH

A quartz watch has the advantage of being very precise even if not worn for a long period of time.

WARNING: Never leave a dead battery inside of your watch.

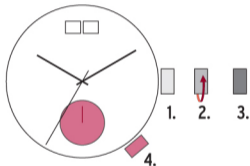
AIRPILOT Cal.N° RONDA 4210.B-DUAL TIME

SWISS QUARTZ MOVEMENT

Screwed crown at 3h

INSTRUCTIONS

- Pos 1. Normal position:
no correction possible
- Pos 2. Date setting: unscrew, pull slightly & turn
- Pos 3. Hours & Minutes setting:
unscrew, pull out completely & turn
4. Dual Time Zone setting:
- press at least 2s to active system
 - press 1s to move minute by minute
 - press 1-2s to move hour by hour
 - press long to move hours & min.
& release when you get correct time



WARNING: In order to secure waterproof quality it is essential that you push and screw the crown tight after every correction.

All Glycine watches are manufactured with special care and attention to detail to ensure a high quality.

AIRMAN

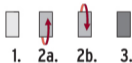
Cal.N° RONDA 515.24H-GMT

SWISS QUARTZ MOVEMENT

Screwed crown at 3h

INSTRUCTIONS

- Pos 1. Normal position:
no correction possible
- Pos 2a. Date setting: unscrew, pull slightly & turn
- Pos 2b. Second Time Zone setting:
unscrew, pull slightly & turn
- Pos 3. Hours & Minutes setting:
unscrew, pull out completely & turn



WARNING: In order to secure waterproof quality it is essential that you push and screw the crown tight after every correction.

For further information about your Glycine watch, please visit the Glycine website:

www.glycine-watch.ch

COMBAT SUB

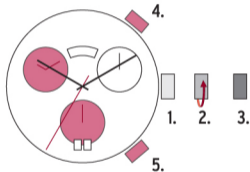
Cal.N° RONDA 5050.C-CHRONO

SWISS QUARTZ MOVEMENT

Screwed crown at 3h
Screwed pusher at 2h
Screwed pusher at 4h

INSTRUCTIONS

- Pos 1. Normal position: no correction possible
- Pos 2. Date setting: unscrew, pull slightly & turn
- Pos 3. Hours & Minutes setting:
unscrew, pull out completely & turn
- Pos 3. Day setting: unscrew, pull out completely
& turn until the correct day appears
4. Start & Stop chronograph setting:
unscrew, press once to start & two to stop
5. Reset chronograph: unscrew & press once



WARNING: In order to secure waterproof quality it is essential that you push and screw the crown & pushers tight after every correction.

THANK YOU FOR BUYING
A
GLYCINE WATCH

AIRMAN

Cal.N° RONDA 6203.B-DUAL TIME

SWISS QUARTZ MOVEMENT

INSTRUCTIONS

Pos 1. Normal position:
no correction possible

Pos 2. Date setting: unscrew, pull slightly & turn

Pos 3. Hours & Minutes setting: unscrew, pull out completely & turn

4. Dual Time Zone setting:
unscrew, pull slightly & turn

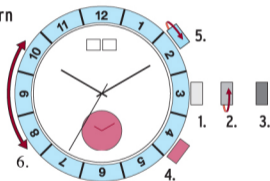
5. Unlock turning bezel: unscrew

6. Second Time Zone setting: turn bezel

Screwed crown at 2h

Screwed crown at 3h

Screwed crown at 4h



WARNING: In order to secure waterproof quality it is essential that you push and screw the crowns tight after every correction.